



Wedding Day Floral Checklist

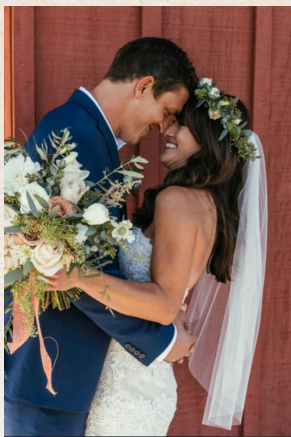
I get it! Planning a wedding means you've got so many things on your mind already...Let me make it easier.

Here are some flowers to consider for your special day!

XOXO,

Kristin Jenett

www.kofloral.com | kristin.osterloh@gmail.com | [@kofloraldesigns](https://www.instagram.com/kofloraldesigns)



CEREMONY:

- Aisle entryway (aka: behind back two innermost chairs)
- Aisle flowers (petals, ground designs, tied to chairs, containers hanging from chairs, etc...)
- Ceremony altar area
- KO Floral does not offer arch rental. Please ask for rental company referrals.
- KO does have ability to create an "illusion" arch with two standing frames,

*Note: All or most of these flowers can be repurposed at the reception!! :)

RECEPTION:

- Reception tables (ROUND or RECTANGULAR?)
- If rectangular, 6 or 8'? King table (wider) or traditional?
- Exposed wood or covered in linen?
- Linen color or runner?
- Plate sprigs (piece of greenery/bloom/small tied bunch of flowers)
- Tall vs Low?
- Rental or Take home?
- Sweetheart table or Head Table?
 - Great place to repurpose ceremony decor!!
 - Place Bridal bouquet here or by cake/desserts?
 - Round or long?
- Candles??
- KO Floral has a few rental options:
 - Glass cylinder in height 9-14" (all below eye-level)
 - Off-white pillar OR floating disc candles available
 - Glass tea lights with small off-white candles
 - Gold tealights in round (~ 30 available) or taller gold



OTHER FLOWERS:

PEOPLE FLOWERS

- Bridal Bouquet
- Bridesmaid Bouquets
- Small version of Bridal bouquet?
 - Same or different color scheme?
 - Note: All bouquets delivered in simple glass vases to preserve and display designs; yours to keep.
- Groom Boutonniere
- Groomsmen Boutonniere
- Mother corsages
 - Options: elastic wrist, pinned shoulder or upgrade for magnetic (+\$3ea)
- Father Boutonnieres
- Ring Bearer
- Flower Girl
 - Petals to toss, fresh flower barrette, fresh flower/green head wreath, mini posy, pomander ball, etc.
- Officiant

WELCOME AREA:

- Welcome sign (flowers/greenery)
- Welcome table

COCKTAIL HOUR:

- Bar
- Belly bars (aka "high tops")
- Low cocktail tables

CAKE/DESSERT TABLE:

- This is a great place to repurpose flowers and bridesmaid bouquets.

IF YOU HAVE ANY
QUESTIONS,

FEEL FREE TO SEND ME A
MESSAGE!

Hey there!

I'm Kristin, KO for short. I am the owner and designer of K.O. Floral Designs. I am a wife, Mama of two, and fun fact: I am also a yoga teacher!

Follow Me on Instagram: @kofloraldesigns

